

Lost Cities

Student Worksheet

Instructions:

1. Go to <http://lostcities.org/>
2. Click “Begin” and complete all thirteen modules. You can pick the order you watch by clicking on “Story List” in the top right corner.
3. Make sure you read all of the embedded text boxes within each module.
4. Follow along with this worksheet and answer the questions.



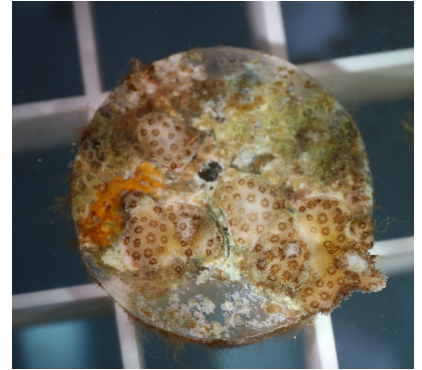
Lost Cities Questions

1. Define symbiosis and explain the relationship between a corals' symbionts and the animal.

2. How do environmental conditions affect coral shape?

3. Explain why coral reefs are extremely important for our food supply. (Think about what lives on a coral reef that we consume.)

4. How do coral reefs impact life on land?



5. How do coral reefs benefit humans in terms of medicine?

6. Explain what happens to coral when temperatures get too warm? Are corals able to recover from these stressors?

7. Compare and contrast the visual characteristics of healthy and unhealthy coral.

8. What are the future ocean conditions that challenge coral reefs?

9. What is one thing scientists are doing to assist the health of coral reefs?

10. We may lose ____% of the world's reefs in _____ because of climate change

11. What actions can we take as individuals and as a community to preserve coral reefs?

Thinking deeper:

1. What do you think would happen if coral reefs disappeared? (Don't just think about life in the ocean, try to think about greater impacts coral reefs have on the planet)

2. What can **you** do to reduce your impact on climate change and help coral reefs? Brainstorm a few things you do everyday or often. Think about a more sustainable way you can accomplish these tasks and challenge yourself to make the change. Maybe you already do some of these things. If so, list them (Examples: brushing your teeth, drinking water, what food you consume).



3. What is one step you can take to combat the effects of climate change in your **community**?

4. What would you like to tell an **elected official** in your town, country or world about climate change and how we can save coral reefs?

5. Click on the “Take Action” tab in Lost Cities. After referring to this, is there anything else you can think of to help reduce your impact on climate change? Consider sharing your answers with your friends and family and encourage them to make the switch too!