

Lost Cities

Student Worksheet

Instructions:

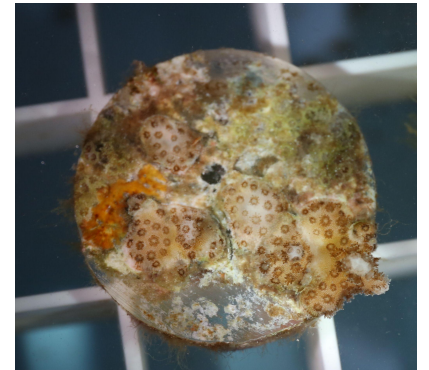
1. Go to <http://lostcities.org/>
2. Click "Begin" and complete all thirteen modules. You can pick the order you watch by clicking on "Story List" in the top right corner.
3. Make sure you read all of the embedded text boxes within each module.
4. Follow along with this worksheet and answer the questions.



Lost Cities Questions

1. A coral is a(n) _____, a _____, and a _____.

2. What does the algae do for the coral?



Group of newly settled coral polyps, attached to a hard surface, and sitting on a tray in the coral lab

3. Why are coral reefs important for our food supply?

4. What is a bleached coral? Is it dead?

5. What change is happening in the ocean that is making corals bleach?

6. What actions can we take as individuals and as a community to preserve coral reefs?

7. Click on the "Take Action" tab in Lost Cities. List a couple things you can do to help coral reefs:

Dig In Deeper....

1. Why do you think that coral polyps all live together in a colony, rather than each polyp living on its own?



A coral colony in the ocean during spawning

2. What are some of the things corals have that make them better able to survive?
3. Why is sunlight important in helping coral grow?